



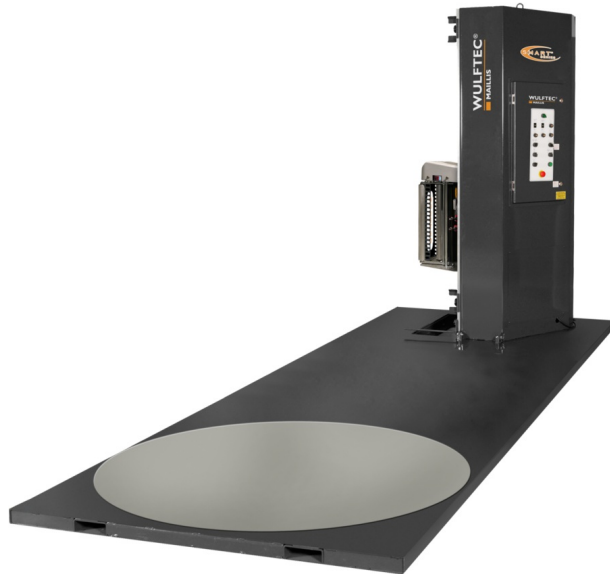
Professional Packaging Systems

2010 S. Great Southwest Parkway
Grand Prairie, Texas 75051
www.ProPac.com

Contact

Our Packaging Experts
solutions@propac.com
888-318-0083

Wulftec SML-EXT Semi-Automatic Turntable Stretch Wrapper



At a Glance

- 2 foot extended base between tower and turntable
- Built for large pallet loads
- Low-profile turntable
- Up to 55 pallet loads per hour
- 20 inch NO-THREAD powered pre-stretch carriage for quick, easy and safe film loading
- These stretch wrappers are built to last forever
- Best warranties in the stretch wrapper industry

Buy your [stretch film](#) from us, and get a discount on this Wulftec stretch wrapper!

Pricing

Call us at 888-318-0083

Many options are available. Complete details will need to be finalized to determine requirements and final system costs. Work with your Pro Pac representative to build this machine to your specifications.

Low-Profile Stretch Wrapper with Extended Base

The Wulftec SML-EXT low-profile standard base has a 2' extension for extra space between the load and the tower, designed for large pallet loads.

Features of the SML-EXT

AC variable frequency drives as standard equipment on all machines

Lower maintenance and better reliability—Wulftec stretch wrappers will save time and money

NEMA 4/12 control panel dust tight and waterproof

The control panel is neatly organized eliminating time otherwise lost searching for wires

The control panel is UL508A approved

Superior electrical/electronic design including Allen Bradley MicroLogix PLC and AC drives

Easy to understand alarm signalization

All motors, proximity sensors, photoeyes and other sensors have quick disconnect cables that simplify installation and maintenance

Photoeyes are maintenance free and protected

All Wulftec structures are made of heavy-duty steel for rugged performance in the harshest work environments

These stretch wrappers are built to last forever

Dual chain driven for balanced movement & no vibration

Quick and easy adjustment of upper and lower carriage travel

The Maintenance-Free spring-loaded carriage gate equipped with spring loaded rollers ensures optimal contact with the stretch film, year after year, without involving maintenance

Wulftec is the only manufacturer to offer a LIFETIME warranty on its pre-stretch roller blue compound

Preset pre-stretch ratios are available from 50-300%

Since all of our semi-automatic SMART Series stretch wrappers wrap 2 inches from the turntable, you are guaranteeing the product is properly secured to the pallet, resulting in a pallet that is more stable for transport, and therefore less damage

No film threading is required and a Lexan cover eliminates operator's ability to reach rollers when gate is closed

Non-Proprietary parts accessible on a local base

SMART Series

The Wulftec SMART Series is a competitively-priced series of semi automatic low and high profile turntable stretch wrappers. A smart approach to semi-automatic stretch wrapping.

Get the exact stretch wrapper you need and pay only for the features you want

Pick and choose the individual components that will best meet your stretch wrapping needs

A better, more competitive price

Modular in design

Better and quicker turnaround

Get the exact machine you need

Adapt without overspending

Upgrade the control panel at any time

Upgrade the base at any time

Upgrade the carriage at any time

Change the tower/wrap height at any time

Best Warranties in the Industry

5-year unlimited cycle warranty

10-year warranty on steel structure

10-year warranty on 25" ring gear bearings

Lifetime warranty on pre-stretch roller blue compound

Please [contact Pro Pac](#) or call 888-318-0083 for your stretch wrapping equipment.

Specifications

Production Rate	55 loads per hour
Machine Dimensions	141.5" L x 66" W x 86.5" H
Load Weight	5000 lbs
Approximate Shipping Weight	2800 lbs
Electrical Requirements	120 V /1 ph /60Hz 15A
Controls	Allen Bradley MicroLogix 1200 PLC 24V control system Current overload protection NEMA 4/12 control cabinet Autoheight sensing photoeye Power on/off switch and status light Start/stop push button Large emergency stop (push / pull type) Manual carriage up/down function Variable table speed (16 RPM) with automatic home position Separate up/down carriage speeds adjustment Separate top and bottom wrap selectors (0-9) Reinforced wrap/manual rotation control Film tension adjustment Lack of film alarm
Structure	14 gauge formed steel tower Forklift Portable base design Heavy duty structural steel construction
Film Delivery System	20" NO-THREAD® Powered Pre-Stretch Carriage 1 HP AC motor with Allen Bradley variable frequency drive Lifetime warranty on pre-stretch rollers blue compound Film force release for easy pull at start and end of cycle 50-400% pre-stretch ratio (preset to customer spec, standard 200%) Electronic film tension control with analog sensor Film roping bar Lexan roller cover for operator safety Proximity sensor on carriage gate to ensure gate is properly closed
Film Carriage Drive	1 HP AC motor with Allen Bradley variable frequency drive Two #50 carriage lifting chains enclosed in tower for safety Bearing supported maintenance free guide wheels
Turntable	65" dia. 3/8" steel plate 32 heavy duty non metallic lube-free table supports 3" table height 2-3/8" high base Ramp accessible on all three sides (consult factory when ordering more than one ramp)
Turntable Drive	0-16 RPM variable speed 1 HP AC motor with Allen Bradley variable frequency drive #50 ANSI heavy duty chain drive Electronic soft start/stop Positive turntable alignment controlled by proximity sensor
Technical Information	The machine is provided with a manual including electro/mechanical schematics and drawings, troubleshooting guide and installation instructions

Options

Carriage	20" hydraulic carriage (no pre-stretch) 30" hydraulic carriage (no pre-stretch) 30" NO-THREAD® Powered Pre-Stretch Carriage Carriage adaptor bracket for 20" film on 30" carriage Manually adjustable dual roping bar Manually adjustable single roping bar Pneumatic roping dual Pneumatic roping dual - extra photoeye Pneumatic roping single Rapid Cut - Basic panel Rapid Cut - Standard panel
Clamp	SMART start clamp and pull cord
Controls	Economy panel Foot pedal start / stop Lanyard remote Pull cord Remote push button station Safety control lockout Upgrade from Basic to Deluxe Upgrade from Basic to Standard Upgrade from Basic to Standard Plus Upgrade from Standard to Standard Plus Warning alarm / horn Warning flashing light Wrap sequence for basic panel
Extension	Wrap height extension - 92in Wrap height extension - 104in Wrap height extension - 116in Wrap height extension - 128in
Motors	Wash down motors Wash-down motors for top platen
Paint	Custom color Epoxy paint Steel-it paint
Photoeye	Dark load detection
Ramp	Ramp Ramp extension
Safety	Safety fencing> Safety fencing for dual turntable units Safety light curtains
Scale	Electronic scale Electronic scale above ground Electronic scale in ground
Temperature Package	Cold A (32 to 41°F / 0 to 5°C) Cold A (32 to 41°F / 0 to 5°C) - Deluxe panel Cold B (5 to 32°F / -15 to 0°C) - Deluxe panel Cold B (5 to 32°F / -15 to 0°C) - Standard panel Cold C (-31 to 5°F / -35 to -15°C) - Deluxe panel Cold C (-31 to 5°F / -35 to -15°C) - Standard panel Fan & Exhaust Warm A (up to 115°F / up to 46°C) Warm B (104°F / 40°C and up)
Top Platen	Electric top platen
Transformer	Customized transformer Standard transformer Transformer for Cold C temperature package
Turntable	90° exit Free roller top Free roller transition High speed 24RPM Second turntable